

5 The Moorings



5 The Moorings

DenisonS

5 The Moorings

Willow Way, BH23 1JJ

£965,000

EXCEPTIONAL WATERSIDE TOWNHOUSE WITH SOUTH-FACING RIVER VIEWS IN A PRIME CHRISTCHURCH LOCATION RARELY available on the market, this STUNNING WATERSIDE TOWNHOUSE offers a UNIQUE OPPORTUNITY to enjoy a LUXURIOUS and PEACEFUL WATERFRONT LIFESTYLE, perfectly balanced with the convenience of VIBRANT TOWN LIVING and access to BEAUTIFUL NATURAL SURROUNDINGS. Immaculately refurbished to an exceptional standard throughout, the property spans three floors and features three spacious double bedrooms, all boasting south-facing views over the picturesque River Stour. The accommodation is light-filled and thoughtfully designed, offering both comfort and style. The bright and airy lounge benefits from sliding doors leading directly onto a private decked terrace which is the largest in the development. In particular the home enjoys its own 8 meter mooring, which the current owner has his boat on and easy access to Christchurch harbour and boating in the Solent, creating an ideal setting for riverside relaxation or entertaining. Additional highlights include a luxury family bathroom, en-suite shower room, a garage and private parking for two cars all set within a private gated community, making it a quiet and secure location. Situated in a highly sought-after residential location, this home is within walking distance to Christchurch town centre and a wide range of local amenities. Its proximity to transport links, Wick Ferry, river walks, Hengistbury Head, and Southbourne beaches makes it the perfect base for enjoying the best of coastal and town living.



Under House Storage

Garage/Utility 8' 3" x 17' 5" (2.51m x 5.30m)

Entrance Porch

Living Room 14' 7" x 17' 11" (4.44m x 5.46m)

Raised Dining Area 8' 3" x 9' 8" (2.51m x 2.94m)

Kitchen 10' 10" x 8' 4" (3.30m x 2.54m)

WC 3' 8" x 5' 1" (1.12m x 1.55m)

Bedroom One 12' 7" x 11' 10" (3.83m x 3.60m)

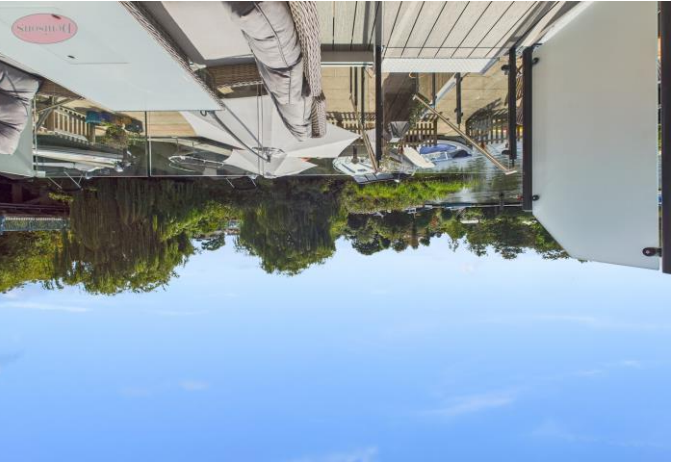
En-suite 4' 9" x 7' 9" (1.45m x 2.36m)

Bedroom Two 14' 8" x 11' 6" (4.47m x 3.50m)

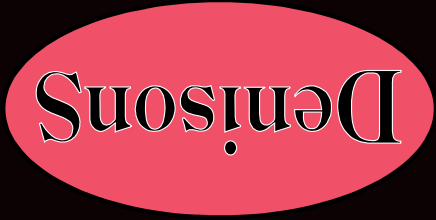
Bedroom Three 8' 3" x 12' 3" (2.51m x 3.73m)

Bathroom 8' 8" x 5' 8" (2.64m x 1.73m)





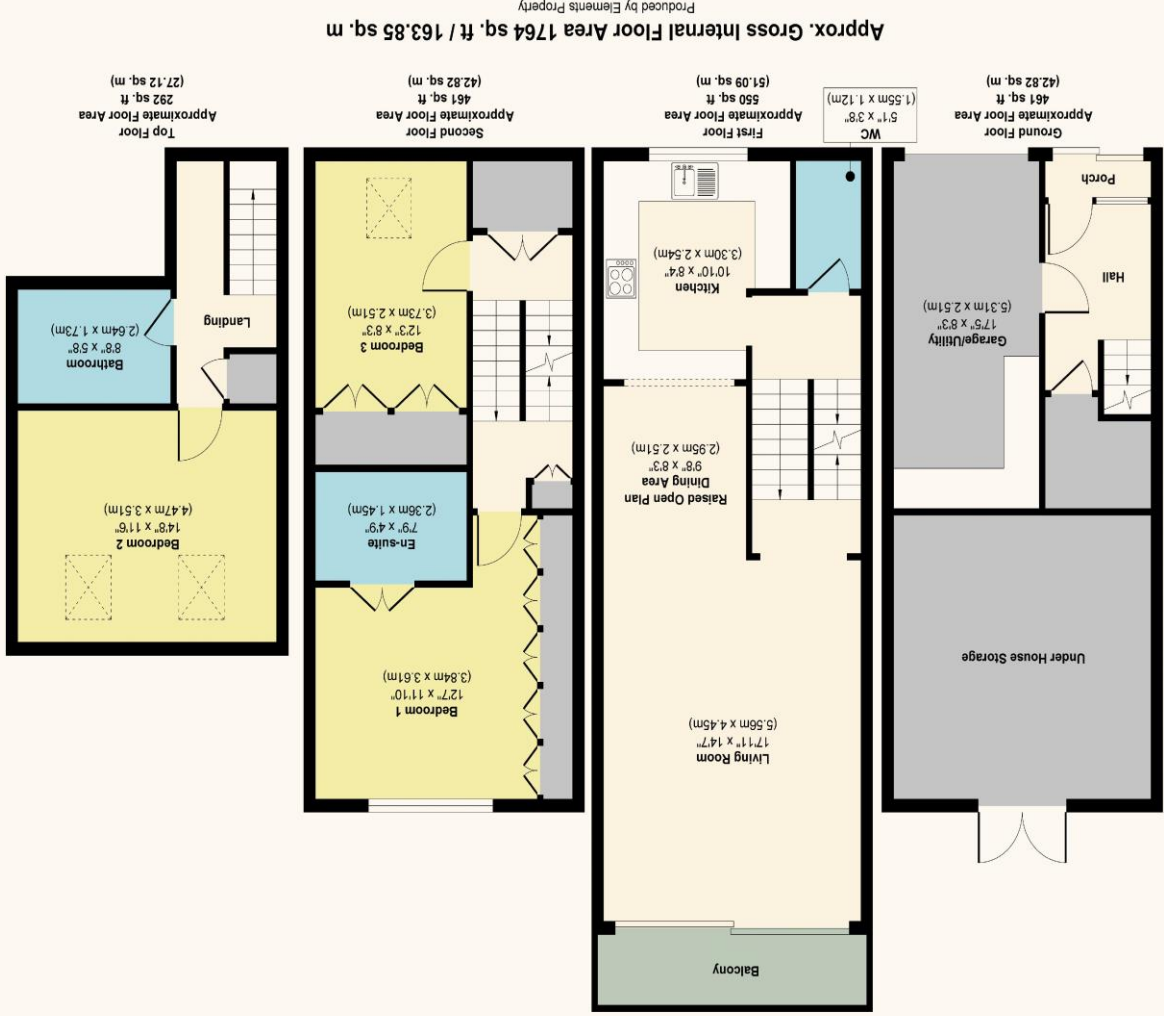
Score	Energy rating	Current	Potential
92+	A		
81-91	B		
69-80	C	74 C	
55-68	D		79 C
39-54	E		
21-38	F		
1-20	G		



www.denisons.com

Denisons for themselves and for the Vendors or lessors of this property, whose Agents they are, give notice that these particulars are produced in good faith, are set out as a general guide only and do not constitute any part of a Contract. No person in the employment of Denisons has any authority to make or give any representation or warranty whatever in relation to this property.

5 The Moorings



Christchurch
12 Castle Street, Christchurch BH23 1DT
01202 484748
christchurch@denisons.com
Mayfair
Cashel House, London, W1U 3JT
0870 112 7099
mayfair@denisons.com